

# Sourdough Update November 2015



## CHAPTER MEETING THURSDAY, NOVEMBER 19TH

The next Chapter meeting will be held on **Thursday, November 19th**

**Speaker:** Phil Steyer, Director of Government Relations and Corporate Communications, Chugach Electric Association

**Presentation topic:** Success of the Southcentral Power Project. "What It Takes to Build a Power Plant in Anchorage"

Executive Board Meeting:	10:30 am	MOA Permit Center, Anchorage, AK
Luncheon Begins:	11:45 am	4700 Elmore Road
Speaker Presentation:	12:00 pm	Please RSVP by Monday, November 16th by accepting the calendar invite

## ANNOUNCEMENTS

- This month's meeting moved to Thursday the 19th.
- We do not meet for our regular Luncheon in December - Happy Holidays from Chapter 49
- Save the date! - Access Law & Issues Affecting Public & Private Lands in Alaska Seminar -
  - February 19th - Dena'ina Civic & Convention Center
  - Speakers Dan Beardsley, SR/WA of Dryden & LaRue & John Bennett, PLS, SR/WA of R&M Consultants, Inc
  - Stay tuned for information regarding registration
- Coming Soon - Details about our Annual Winter Event
- Planning any Professional Development in 2016? Now is the time to consider our 2016 Education schedule and add them to your budgets.
  - We are holding C-505 & C-506: Advanced Relocation classes in January and C-209: Negotiations class in February
- Start planning for the 2016 Education Conference coming up June 12-15

## UPCOMING MONTHLY LUNCHEON DATES:

### December:

No Luncheon—Stay tuned for information on our winter party.

### January:

Wednesday Jan. 20, 2016

### February:

Wednesday Feb. 17, 2016

## OTHER EVENTS:

January 20, 2016  
Course 505: Advanced Residential Relocation Assistance  
Coordinator: Fran Murphy  
343-8283

January 21-22, 2016  
Course 506: Advanced Business Relocation Assistance  
Coordinator: Claire Mueller  
562-2000

February 25-26, 2016  
Course 209: Negotiating Effectively with a Diverse Clientele  
Coordinator: Louise Hooyer  
269-0713

## ANNOUNCEMENTS CONTINUED

- The Monday Night Event has been revealed - see the last page
- The 2017 Conference Committee is holding their next meeting Nov. 11 - see flyer
  - They are still looking for some volunteers to help make this event a success.
  - Do you know someone who is skilled at fundraising? GREAT! Let the committee know about this wonderful person.

## OPEN POSITIONS AND INVOLVEMENT OPPORTUNITIES

We are currently looking for volunteers for:

**Professional Development Chair** - Judy Hartley has served us well and is moving on to new endeavors.

**Future vacancy: Treasurer** - Please consider this great opportunity to volunteer for our Chapter. Louise intends to train any incoming treasurer to smooth the transition.

**Newsletter** - This is a creative way to volunteer and stay up to date on the happenings of Chapter 49!

**Lunch Coordinator** - Please consider volunteering to coordinate the lunch offerings and invites for our monthly meeting

**We need Course Coordinators for the 2016 course offerings.** Please consider becoming a course coordinator and take the course for free! Contact Deanna Kilburn at [deanna.kilburn@hdrinc.com](mailto:deanna.kilburn@hdrinc.com).

**As you can see we have quite a few open positions - Just waiting for your talent! Consider volunteering for one of these positions.**



### Next 2017 Meeting:

November 11<sup>th</sup> at 5:00 pm

At Dryden & LaRue, Inc.

Call in:

1-866-583-7984

Code: 822 6712

Dated November 3, 2015



Chapter 49:  
[www.irwa49.org](http://www.irwa49.org)

Region 7:  
[www.irwaregion7.org](http://www.irwaregion7.org)

International:  
[www.irwaonline.org](http://www.irwaonline.org)

### About the IRWA

Since its inception as a not-for-profit association in 1934, IRWA has united the efforts of its members toward professional development, strong ethics, and improved service to employers and the public, along with advancements within the right of way profession. IRWA is the unsurpassed source of right of way educational programs and professional services worldwide.

### Our Members

Dedicated exclusively to the right of way profession, IRWA has nearly 10,000 members throughout the U.S. and Canada. Our members are multi-disciplined professionals employed by private industry and government agencies as Acquisition Agents, Appraisers, Environment Professionals, Engineers, Lawyers, Property Managers, Relocation Assistance Agents, Surveyors, and Title Experts.

### Professional Development Focus

Billions of dollars are spent annually in the acquisition, management, and transfer of rights of way. With the technical skills required for proficiency in this complex activity, IRWA's specialized education and training programs, leading to professional certifications and the IRWA's designation, the SR/WA, provide an essential foundation for right of way professionals across the U.S. and Canada. Visit our website at [www.irwaonline.org](http://www.irwaonline.org) to review the descriptions of the more than 50 courses currently available and our credentialing program.

## 2015/16 CHAPTER 49 OFFICERS AND COMMITTEE CHAIRS

### President International Director

Paula Brault  
[Paula.brault@hdrinc.com](mailto:Paula.brault@hdrinc.com); 644-2111

### Vice-President International Director

Frederick Mortimer  
[fmortimer@drydenlarue.com](mailto:fmortimer@drydenlarue.com); 646-5128

### Treasurer

Louise Hooyer, SR/WA  
[louise\\_hooyer@alaska.gov](mailto:louise_hooyer@alaska.gov); 269-0713

### Secretary

Claire Mueller  
[cmueller@dowlhkm.com](mailto:cmueller@dowlhkm.com); 562-2000

### Immediate Past President

Steve Schmitt, PLS, SR/WA  
[schmittsg@muni.org](mailto:schmittsg@muni.org); 343-8366

### Education

Deanna Kilburn, RWA - Chair  
[deanna.kilburn@hdrinc.com](mailto:deanna.kilburn@hdrinc.com); 644-2043

Claire Mueller, RWA - Vice-Chair  
[cmueller@dowl.com](mailto:cmueller@dowl.com); 562-2000

### Professional Development

Chair - Open Position  
Judy Hartley - Interim Chair

Bonnie Bailey, SR/WA-Vice-Chair  
[bbailey@ak.net](mailto:bbailey@ak.net); 696-2163

### Membership

Karen Keesecker  
[karen\\_keesecker@chugachelectric.com](mailto:karen_keesecker@chugachelectric.com)

### Nominations and Elections

Tom Kretzschmar, Chair  
[thomas.kretzschmar@hdrinc.com](mailto:thomas.kretzschmar@hdrinc.com);

### 2017 Conference

Pat Thayer, SR/WA-Chair  
[patricia.thayer@hdrinc.com](mailto:patricia.thayer@hdrinc.com); 328-2233

Kathryn Schreckenghost-Vice-Chair  
[kschreckenghost@drydenlarue.com](mailto:kschreckenghost@drydenlarue.com); 646-5169

### Newsletter

Open Position

### Alaska Membership Directory

Alan C. Trawver, SR/WA  
[alan@trawverlandservices.com](mailto:alan@trawverlandservices.com); 346-2433

### Website (Chapter 49 and Region 7)

Timothy A. Trawver, SR/WA  
[tim@trawverlandservices.com](mailto:tim@trawverlandservices.com); 346-2433

### Picnic / Winter Event Coordinator

Steve Schmitt, PLS, SR/WA  
[schmittsg@muni.org](mailto:schmittsg@muni.org); 343-8366

### Programs

Vicki Gerken, SR/WA  
[gerkenvl@muni.org](mailto:gerkenvl@muni.org); 343-8187

Dan Beardsley, SR/WA-Vice-Chair  
[dbeardsley@drydenlarue.com](mailto:dbeardsley@drydenlarue.com); 646-5139

### Lunch Coordinator

Open Position



Deanna Kilburn, Education Chair: 907-644-2000

## 2016 UPCOMING CLASSES

**January 20**

**C-505 Advanced Residential Relocation**

**Instructor:**

**Brad K. Thomas, SR/WA, R/W-RAC**

This course requires a thorough understanding of the relocation process. This course begins with an awareness exam; then, in case-study format, covers residential relocation issues. There is a detailed analysis of each case study so that participants understand the lead agency's theory behind its interpretation of the situation. Facts are applied in order to simulate a relocation that is consistent with the intent of the Uniform Act.

**Course Coordinator:**

**Fran Murphy, SR/WA  
907-343-8283**

**To register online go to: [IRWA Education page](#) then enter the course number and scroll to find the Anchorage course offering. NOTE: To qualify for the 10% group discount, all registrations must be processed together and sent via fax to IRWA Headquarters or email to the Course Coordinator.**

**January 21-22**

**C-501 Advanced Business Relocation**

**Instructor:**

**Brad K. Thomas, SR/WA, R/W-RAC**

This course begins with a pre-assessment of the participants' knowledge, followed by case study analysis of complex business relocation issues which require a thorough understanding of the relocation process and the Uniform Act. A detailed analysis of each case study is provided so participants understand the lead agency's theory behind its interpretation of the situation. Facts are applied in order to simulate a relocation that is consistent with the intent of the Uniform Act.

**Course Coordinator:**

**Claire Mueller, RWA  
907-562-2000**

**To register online go to: [IRWA Education page](#) then enter the course number and scroll to find the Anchorage course offering. NOTE: To qualify for the 10% group discount, all registrations must be processed together and sent via fax to IRWA Headquarters or email to the Course Coordinator.**

Updated November 3, 2015



## 2016 – EDUCATIONAL SEMINAR

### **NEW! Access Law and Issues Affecting Public & Private Lands in Alaska February 19, 2016 at the Dena'ina Center**

**Speakers:**

**Dan Beardsley, SR/WA, Dryden & LaRue, Inc.  
John Bennett, PLS, SR/WA, R&M Consultants, Inc.**

**Seminar Coordinator:**

**Vicki Gerken, SR/WA  
907-343-8187**

Topics covered in this one-day seminar include:

- RS 2477 Rights of Way
- Public Land Orders and Other Highway Rights of Way
- Alaska Native Claims Settlement Act 17(b) Easements
- Alaska Supreme Court Cases – Easements
- Public Prescriptive Easements

**BROCHURE AND REGISTRATION INFORMATION COMING SOON!**

### \*2016 Education Schedule

\*Subject to change

January 20	C-505 Advanced Residential Relocation Assistance Instructor: Brad Thomas	Fran Murphy 907-343-8283
January 21-22	C-506 Advanced Business Relocation Assistance Instructor: Brad Thomas	Claire Mueller 907-562-2000
February 19	Access Law and Issues Affecting Public & Private Lands in Alaska Speakers: Dan Beardsley and John Bennett	Vicki Gerken 907-343-8187
March 24	C-604 Environmental Due Diligence and Liability Instructor: Michael Travis	Deanna Kilburn 907-644-2043
April 21-22	C-417 The Valuation of Environmentally Contaminated Real Estate Instructor: David Burgoyne	Glenda Smith 907-861-7864
May 12-13	C-209 Negotiating Effectively with a Diverse Clientele Instructor: TBD	Louise Hooyer 907-269-0713
September 21-23	C-421 The Valuation of Partial Acquisitions Instructor: TBD	<b>Need Course Coordinator</b>
October 20-21	C-215 Right of Way Pipeline Projects Instructor: TBD	<b>Need Course Coordinator</b>
December 8-9	C-701 Property/Asset Management: Leasing Instructor: TBD	<b>Need Course Coordinator</b>

### \*2017 Education Schedule

\*Subject to change

TBD	C-230 Oil and Gas Land Basics and Related Surface Rights Issues Instructor: TBD	Diane Sam 907-269-4050
TBD	C-902 Property Descriptions Instructor: TBD	<b>Need Course Coordinator</b>
TBD	C-400 Principles of Real Estate Appraisal Instructor: TBD	<b>Need Course Coordinator</b>
TBD	C-205 Bargaining Negotiation Instructor TBD	<b>Need Course Coordinator</b>



**June 12 – 15**

**IRWA**

- Welcome
- Convince the Boss**
- General Information
- Travel & Housing
- Schedule of Events
- Leadership Schedule
- Educational Sessions
- Sponsorship
- Exhibitor

Welcome to the International Right of Way Association's 62nd Annual International Education Conference held in Nashville, Tennessee, at the Gaylord Opryland Resort & Convention Center. We invite you to attend this valuable industry event and take advantage of the many educational and learning opportunities, as well as the networking events that have been planned just for you. Please feel free to contact us if you have any specific questions regarding the annual conference, and check our website often for updates regarding our plans as we continue mapping out your educational event of the year!

Sincerely,

Your 2016 Conference Planning Committee

**Jenni Kriner, SR/WA**

2016 Conference Chair  
jk17bear@yahoo.com

**J. Dan Gill, SR/WA**

2016 Conference Chair  
gilld@realtracs.com

**Jade Meador, CMP**

Director of Events  
meador@irwaonline.org  
(310) 538-0233 x146

**Daniel Stekol**

Vice President - Field Operations  
stekol@irwaonline.org  
(310) 538-0233 x126

19210 South Vermont Avenue, Building A, Suite 100, Gardena, CA 90248  
Telephone: (310) 538-0233 Fax: (310) 538-1471 Canadian Toll Free # 888-340-IRWA (4792)  
© 2014 International Right of Way Association - All Rights Reserved



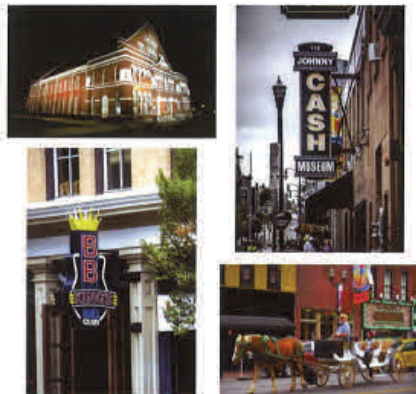
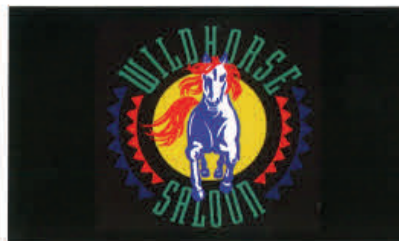
**"A NIGHT IN DOWNTOWN NASHVILLE"**

- Transportation from and to Opryland Hotel
- Exclusive all-access use of the Famous Wildhorse Saloon — Nashville's # 1 dining and entertainment destination!
  - \* Buffet Dinner
  - \* Live Band
  - \* Line Dance Instructor
  - \* Games and Billiards
- Take A Stroll Downtown
  - \* The all-access pass allows you to leave and enjoy the Broadway Night Life and re-enter the Wildhorse at your convenience.
  - \* The All-Access Pass is for the Wildhorse ONLY.

**COST:**

Adults -----\$60.00  
Youth 7-18 -----\$30.00  
6 and Under -----Free

Monday Night — June 13, 2016



**"A Night in  
Downtown  
Nashville"**



**Y'all Come!**